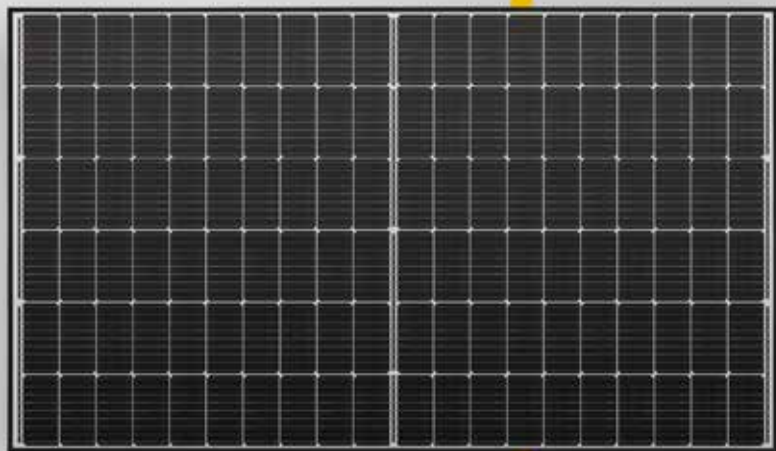




## Solar Modules MONOCRYSTALLINE



### **Mono S3** - Halfcut

370 W • 375 W • 380 W

- Half cell modules - High efficiency, high safety, high reliability
- Highly transparent self-cleaning glass
- High performance under low light conditions
- Resistant to environmental influences: Passed salt mist & ammonia test
- Area utilization 205.85 W/m<sup>2</sup> at 375 W
- Multibusbar-technology
- German warranty

# Mono S3 - Halfcut


## Electrical data under STC (Standard Test Conditions: 1000 W/m<sup>2</sup>, 25 °C, AM 1.5)

Parameter	Symbol	370 W	375 W	380 W
Rated power	$P_{max}$	370 W	375 W	380 W
Sorting limits of performance		0/+3 %	0/+3 %	0/+3 %
Voltage	$U_{MPP}$	33.95 V	34.10 V	34.24 V
Open circuit voltage	$U_{OC}$	41.72 V	41.89 V	42.06 V
Current	$I_{MPP}$	10.91 A	11.01 A	11.11 A
Short-circuit current	$I_{SC}$	11.32 A	11.43 A	11.52 A
Efficiency		20.31 %	20.59 %	20.86 %

## Temperature data

Operating temperature		-40 °C ~ +85 °C
Nominal operating cell temperature		45 ± 2 °C
Power temperature coefficient	$T_k(P_{MPP})$	-0.328 %/K
Voltage temperature coefficient	$T_k(U_{OC})$	-0.265 %/K
Current temperature coefficient	$T_k(I_{SC})$	0.0487 %/K

## Further information

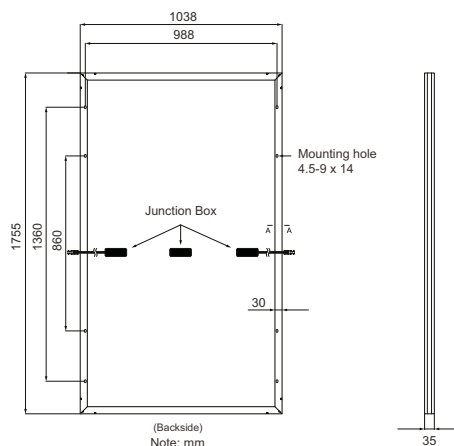
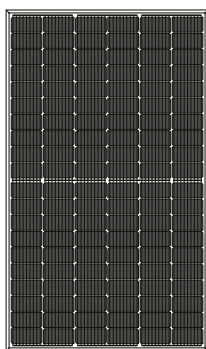
Number of cells	120 monocrystalline half cells (6 x 20)	
Size of cell	166 x 83 mm	
Module dimensions	1755 x 1038 x 35 mm	
Type of Frame	Anodized aluminium alloy	
Max. system voltage	1500 V	
Reverse current loading capability	20 A	
Glass thickness	3.2 mm	
Weight	about 19.5 kg	
Module connection	MC4 compatible, 4.0 mm <sup>2</sup> , cable length: (+) ≥ 1200 mm, (-) ≥ 1200 mm	
Junction box rating	IP68	
Allowable Hail Load	25 mm iceball with velocity of 23 m/s	
Snow load	5400 Pa $\hat{=}$ 550 kg/m <sup>2</sup>	

15-year product warranty, 25-year linear performance warranty according to our additional warranty conditions for solar power modules of the "Mono S3" product series, which we will gladly send you.

Due to the tolerance of the anti-reflective coating, colour differences in the All Black modules may occur.

Subject to technical modifications with corresponding follow-up certifications. Errors excepted. Illustration similar.

### Mono S3 - Halfcut (half cell module)

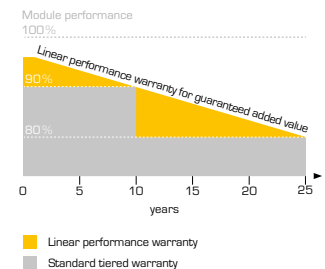
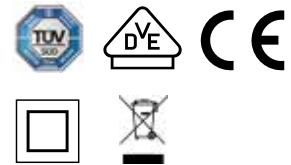


**Note:**  
Ensure correct polarity!

## Packaging Specifications

Truck	
Dimension pallet (L/W/H)	180/113/121 cm
Weight pallet	approx. 655 kg
Modules per pallet	31
Modules per truck	868

Shipment	
Dimension pallet (L/W/H)	180/113/121 cm
Weight pallet	approx. 655 kg
Modules per pallet	31
Modules per container [40' HC]	806



Your specialist dealer:

**Solar Fabrik GmbH**  
Hermann-Niggemann-Str. 7  
63846 Laufach  
Deutschland

Telefon: +49 (0)6093 20770-0  
Telefax: +49 (0)6093 20770-99  
E-Mail: info@solar-fabrik.de  
Internet: [www.solar-fabrik.de](http://www.solar-fabrik.de)